

**COMPRESSOR**

Displacement (cm <sup>3</sup> )	25.93
Diameter (mm)	39.98
Stroke (mm)	20.65
Net Weight (Kg)	22.7
Oil type	ISO VG 46 MINERAL
Oil charge (cm <sup>3</sup> )	887

**MOTOR**

Approximate Power (CV)	1
Voltage/Frequency (V/Hz)	230V 60Hz
Voltage range (V)	196-253
Code	-
Type	CSR
Phase number	1 PH
Locked rotor current (A)	43.0
Main W. resist. at 25°C (Ω)	1.22
Start W. resist. at 25°C (Ω)	3.36

**APPLICATION**

Application	High/Mid. back pressure
Refrigerant	R22
Evaporating (°C)	-25 to 10
Expansion	Capillar/Valve
Comp. cooling	Fan cooled
Max. ambient temp. (°C)	43

**NOMINAL PERFORMANCE**

	<b>CYCLE C</b>	<b>CYCLE D</b>
Cooling capacity (kcal/h)	3124	3661
Input power (W)	1713	1800
EER (kcal/Wh)	1.82	2.03
COP (W/W)	2.12	2.36
Current (A)	8.12	8.49

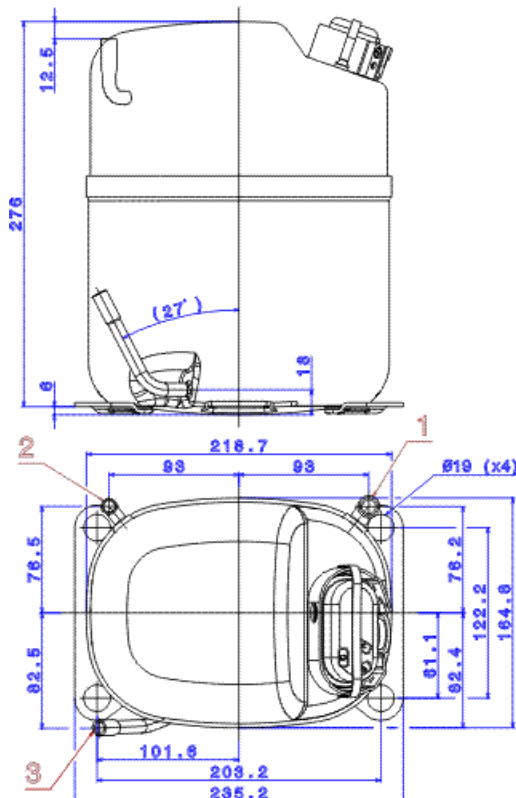
**TEST CONDITIONS**

Evaporating temp. (°C)	5.0	7.2
Condensing temp. (°C)	55.0	55.0
Liq.t. entering expans. (°C)	55.0	46.0
Ambient t. and return (°C)	32.0	35.0
Tens/Freq (V/Hz)	230V 60Hz	230V 60Hz

**ELECTRICAL COMPONENTS**

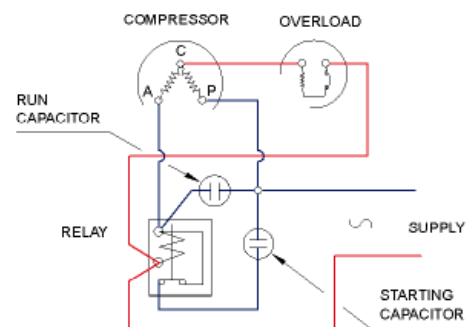
Relay	3ARR3 10S3	RVA 3AG..
Pick-Up	180-195 (V)	180-195 (V)
Drop-Out	40-105 (V)	40-105 (V)
Protector	CST00AJN	GA3SMV81
Current (A)	28.5	29.5
Time check (seg)	7.5-14	6.0-16
Disc temp. (Open/Close) (C)	120.0 / 69.0	120.0 / 57.0
Starting capacitor (μF/V)F/V)	88-108 / 330	
Run capacitor (μF/V)	20 / 450	

**DIMENSIONS AND ELECTRICAL DIAGRAM**



	<b>DESIGNATION</b>	<b>INTERNAL DIAM. (MM)</b>
1	Suction	12,7
2	Service	9,6
3	Discharge	8,0

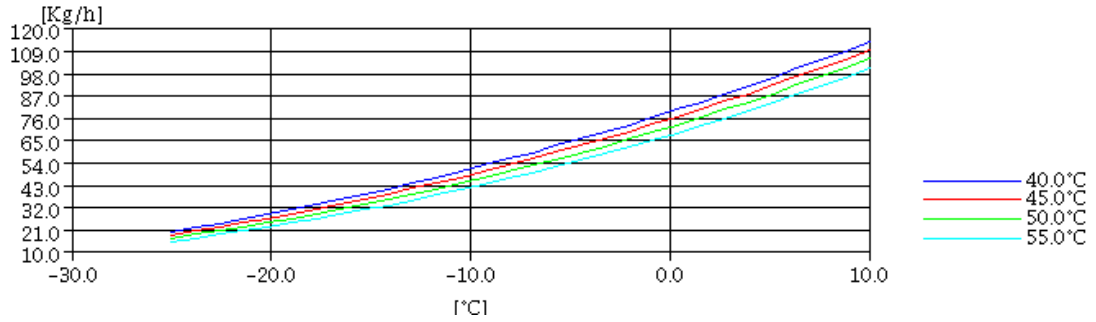
**CSR**



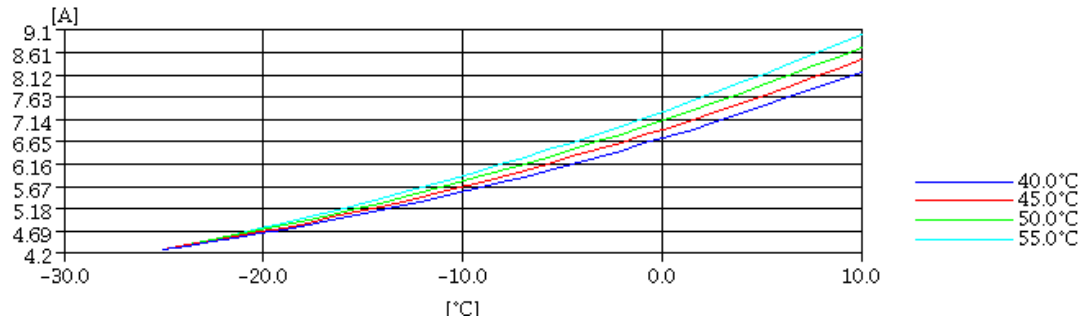
**TEST CONDITIONS**

Voltage/frequency	230V 60Hz
Ambient t. and return	35 °C
Liq.t. entering expan.	Subcooling 9 K

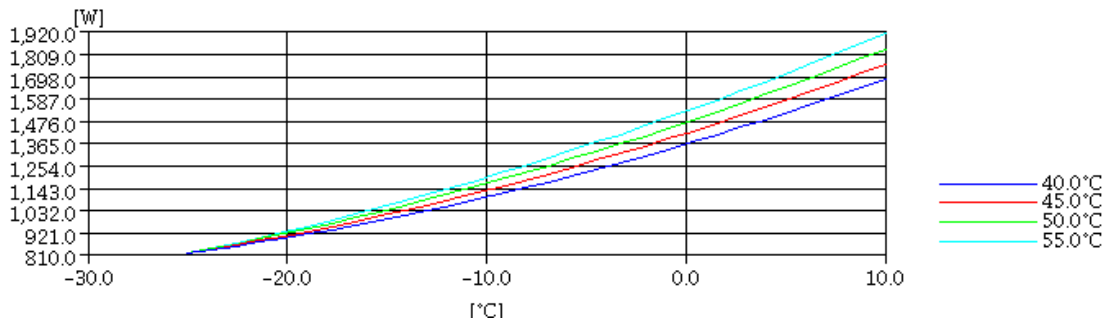
**MASS FLOW**



**INTENSITY**



**CONSUMPTION**



**COOLING CAPACITY**

